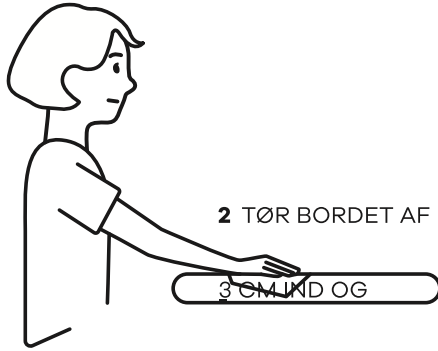


DK



1 ELEV REGISTRERER SIG

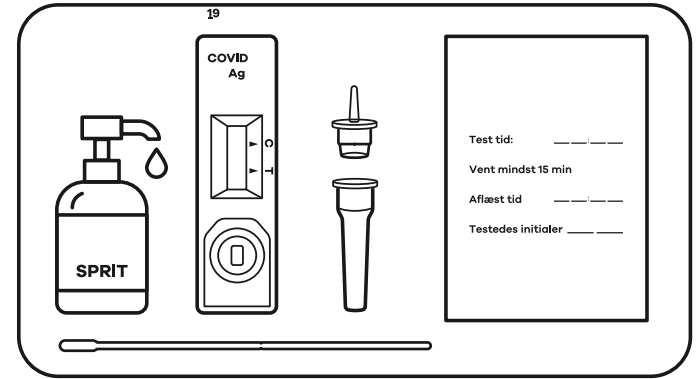


2 TØR BORDET AF

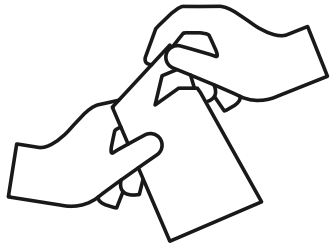
3 CM LIND OG



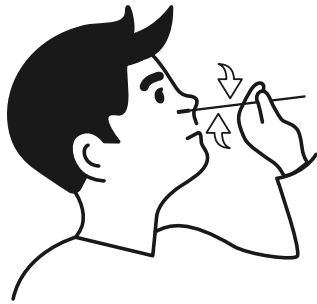
3 SPRIT HÆNDER AF



4 STIL PODEMATERIALE KLAR

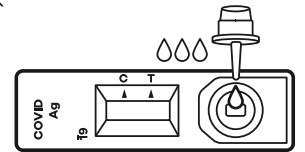
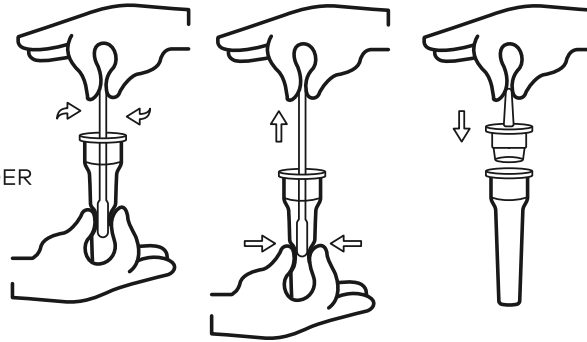


5 PAK PODEBRIK OG PODEPIND UD

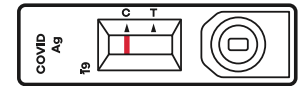


6 POD I BEGGE NÆSEBOR. PINDEN SKAL 2 DREJES 4 GANGE RUNDT

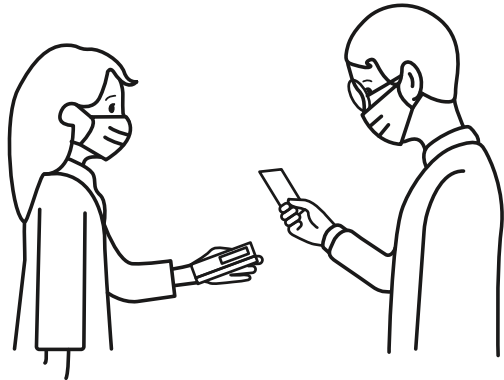
7 RØR PODEPIND RUNDT I BEHOLDER 10 GANGE OG SÆT TUT PÅ



8 KOM 4 DRÅBER I TESTBRIK



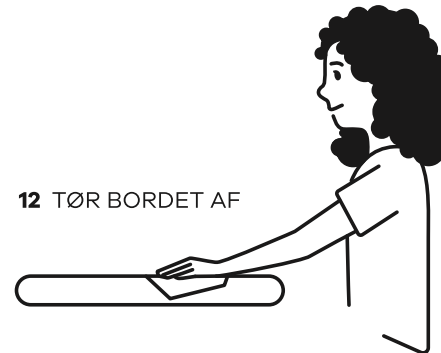
9 TJEK, AT DER KOMMER RØD STREG VED MÆRKE C PÅ TESTBRIK



10 ELEV AFLÆSER TESTRESULTAT. SUPERVISOR KONTROLLERER.



11 EFTER AFLÆSNING SMIDES PRØVESÆTTET UD



12 TØR BORDET AF



13 SPRIT HÆNDER AF



COPENHAGEN MEDICAL