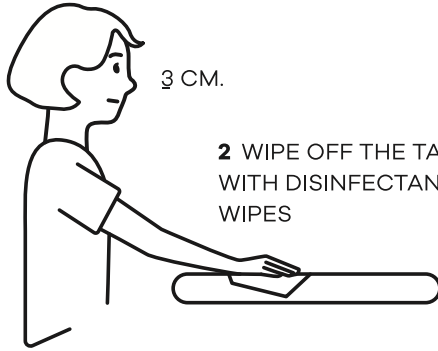


UK



1 THE STUDENT REGISTERS ITSELF

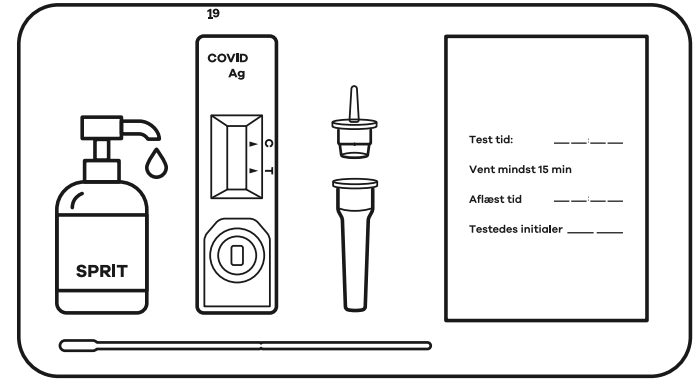


3 CM.

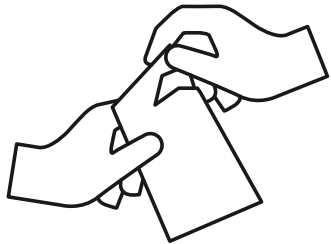
2 WIPE OFF THE TABLE WITH DISINFECTANT WIPES



3 SANITIZE HANDS



4 PLACE TEST MATERIAL ON THE TABLE

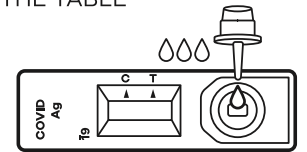
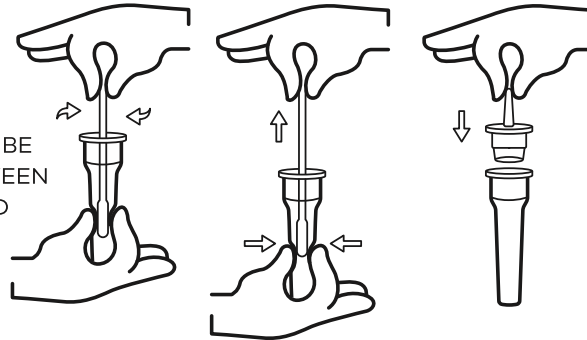


5 UNPACK THE SWAB AND THE TEST DEVICE

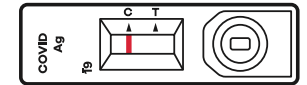


6 SWAB YOURSELF IN BOTH NOSTRILS. THE SWAB MUST BE INSERTED 2 AND ROLLED 4 TIMES BETWEEN THE FINGERS IN EACH NOSTRIL

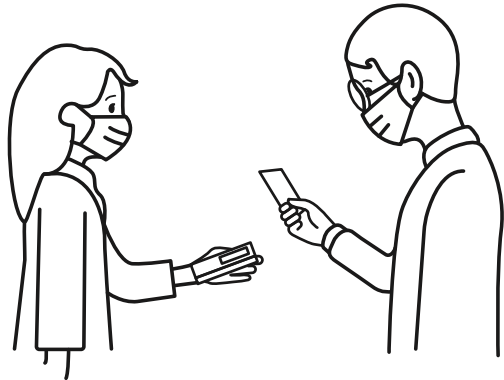
7 INSERT SWAB IN THE TUBE AND ROLL 10 TIMES BETWEEN THE FINGERS. PUT THE LID ON THE TUBE



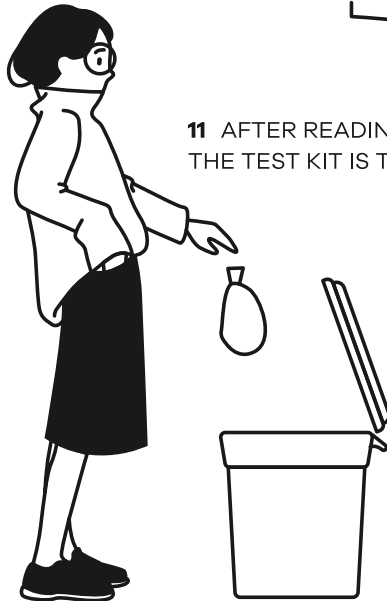
8 DRIP 4 DROPS OF FLUID FROM THE TUBE INTO THE OVAL OPENING OF THE TEST DEVICE



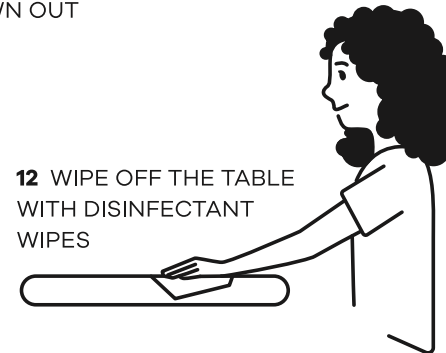
9 CONFIRM THAT A RED LINE APPEARS BY THE C ON THE TEST DEVICE



10 THE STUDENT READS THE TEST RESULT. A SUPERVISOR CONFIRMS



11 AFTER READING THE TEST RESULT, THE TEST KIT IS THROWN OUT



12 WIPE OFF THE TABLE WITH DISINFECTANT WIPES



13 SANITIZE HANDS



COPENHAGEN MEDICAL